

aune[®]

S17 Pro

Fully-Discrete Class-A Fully-Balanced Headphone Amp

User Manual

Preface

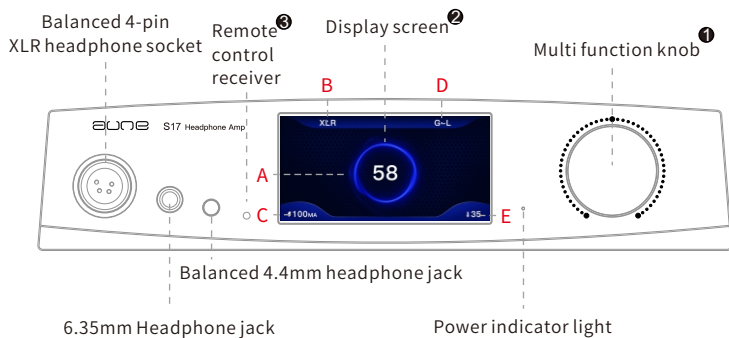
Dear Customer,

Thanks for purchasing the S17 Pro and congratulations on choosing this high quality headphone amplifier.

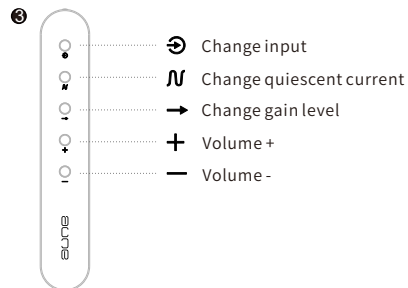
We sincerely hope the brand new S17 Pro will bring you excellent Hi-Fi experience.

Please read this manual carefully before using the device.

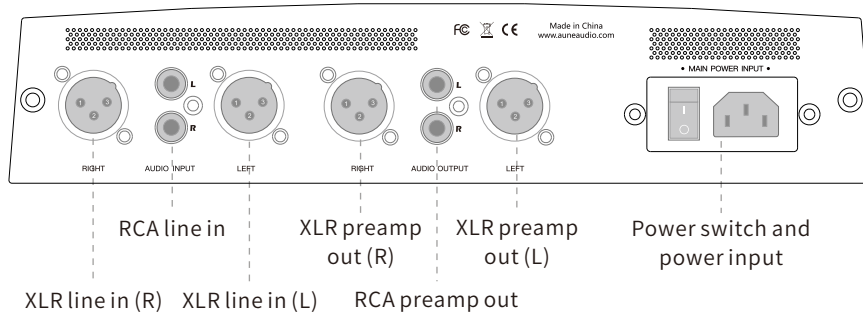
Front Panel and Remote



- ① Multifunction Knob:
 1. Rotate: adjust volume (MAX: 63)
 2. Single press: change input (RCA/XLR)
 3. Double press: change quiescent current (50mA/100mA)
 4. Press and hold: change gain level
 - G-L: low gain
 - G-H: high gain
- ② A : Current volume
 B : Current input channel
 C : Current quiescent current
 D : Current gain level
 E : Current temperature of the internal power transistor



Rear Panel



Introduction

As aune's new generation of fully-discrete class-A headphone amp, the S17 Pro has the features of twin JFET, R2R volume control, 2 levels of current to select from (50mA/100mA class-A quiescent current per transistor), output power as high as 7.5W, 3 groups of headphone outputs + 2 groups of preamp outputs, etc. It is a high-performance rich-sounding headphone amplifier with high power.

Specifications

Input/Output Impedance:

RCA input impedance:10K Ω RCA preamp output impedance:200 Ω
XLR input impedance:22K Ω XLR preamp output impedance:100 Ω
XLR/6.35/4.4 headphone output impedance:1 Ω

Single-Ended 6.35mm Headphone Output:

Frequency response (20Hz~80kHz): ± 0.05 dB
THD+N :<0.00038% @1kHz
SNR:>115dB @600 Ω
Crosstalk:< -105dB @1kHz 600 Ω

Balanced XLR headphone output:

Frequency response (20Hz~80kHz): ± 0.05 dB
THD+N:<0.00016% @1kHz
SNR:>116dB @600 Ω
Crosstalk:< -110dB @1kHz 600 Ω

Dimensions: 288*211*63 (mm)

Accessories: power cord, 6.35mm to 3.5mm adapter, remote control, quick start guide

Specifications - Output Power

G-L Low Gain Single-Ended Output	Load	Power
	32Ω	738mW
	100Ω	250mW
	150Ω	166mW
	250Ω	100mW
	300Ω	83mW
	470Ω	53mW
	600Ω	41mW

G-H High Gain Single-Ended Output	Load	Power
	32Ω	2020mW
	100Ω	675mW
	150Ω	453mW
	250Ω	273mW
	300Ω	228mW
	470Ω	145mW
	600Ω	114mW

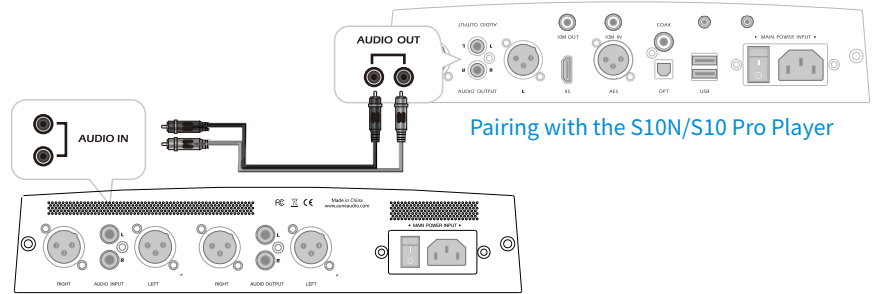
G-L Low Gain Balanced Output	Load	Power
	32Ω	2773mW
	100Ω	968mW
	150Ω	645mW
	250Ω	388mW
	300Ω	333mW
	470Ω	212mW
	600Ω	166mW

G-H High Gain Balanced Output	Load	Power
	32Ω	7507mW
	100Ω	2643mW
	150Ω	1793mW
	250Ω	1089mW
	300Ω	908mW
	470Ω	580mW
	600Ω	453mW

Operations

As a Headphone Amp

1. Player line output → S17 Pro line input (RCA/XLR)
2. Insert headphones
3. Press the knob to select input
4. Rotate the knob the adjust volume
5. Double press the knob to change quiescent current level
6. Press and hold the knob to change gain level



S17 Pro Rear Panel

Single press: change input / long press: change gain level / double press: change current level



S17 Pro Front Panel



The aune AR5000 headphones are recommended

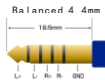
Caution:

Do not plug in more than one pair of headphones



4-Pin Balanced XLR Socket

Left channel+
Left channel-
Right channel+
Right channel-



Operations

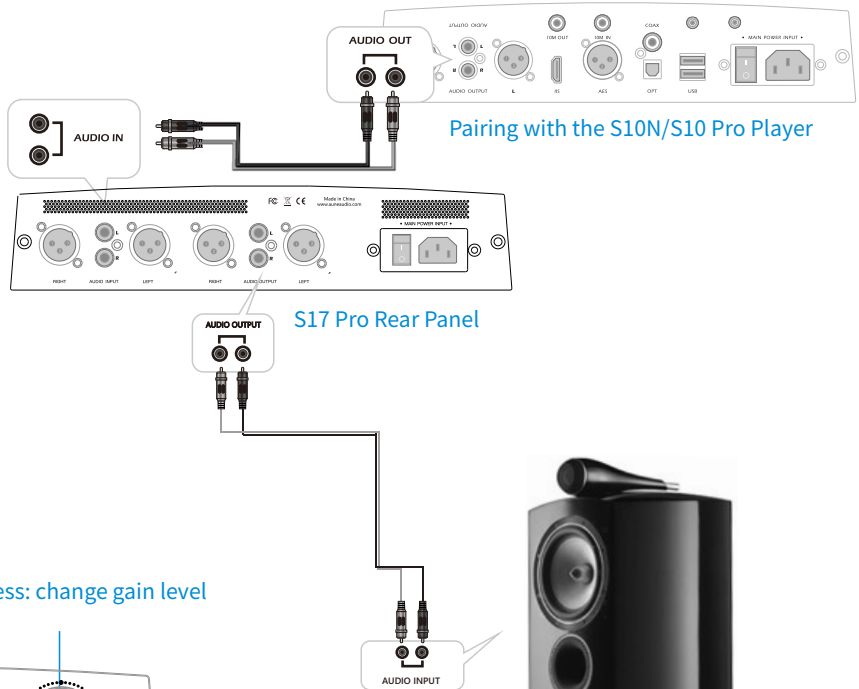
As a Preamp

1. Player line output → S17 Pro line input (RCA/XLR)
2. S17 Pro preamp out → amp or active speakers
3. Press the knob to select input
4. Rotate the knob the adjust volume
5. Double press the knob to change quiescent current level
6. Press and hold the knob to change gain level

Single press: change input / long press: change gain level / double press: change current level



S17 Pro Front Panel



Active Speakers

aune

aune | 430034 WUHAN | CHINA

Email: sales@auneaudio.com | Fax: +86-27-85840435 | www.auneaudio.com